

Student Mental Health Data Collection & Use

Kristy Alimenti, Ed.S
Mental Health Services & Systems Coordinator
Delta-Schoolcraft Intermediate School District
Esanaba, MI
kalimenti@dsisd.net

DSISD Mental Health Services

- Who we are.
- Who we serve.
- How we started collecting & utilizing data.



Kristy Alimenti

- School Psychologist - 16 years
- Mental Health Services & Systems Coordinator DSISD - 2 years

New Position at DSISD; General Education Department

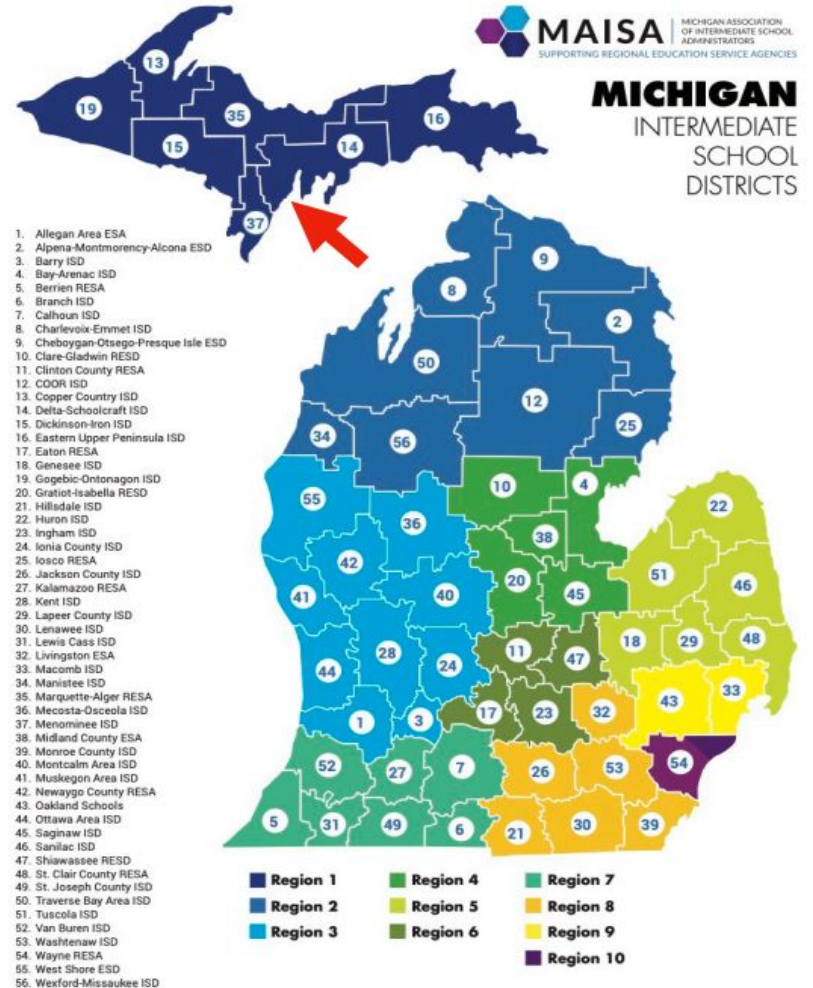
- 31n General Education MH Services
- Project AWARE [5-year grant]
- TRAILS Coordination and Implementation
- Youth Mental Health First Aid Instructor

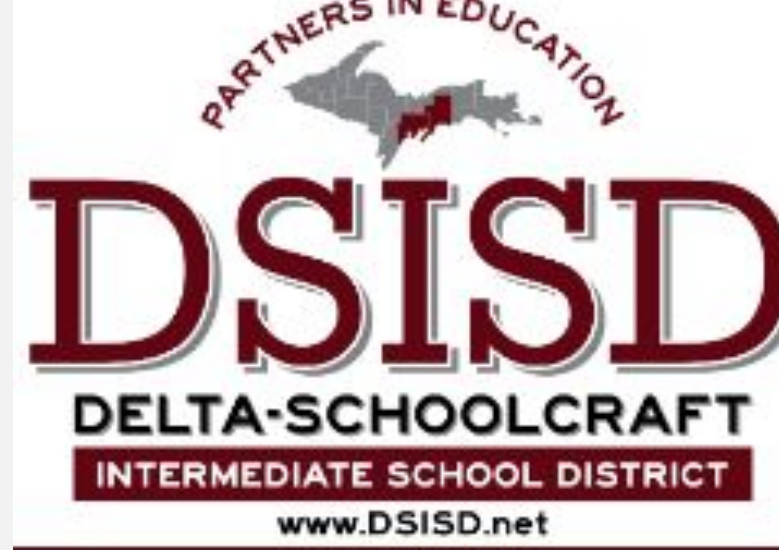
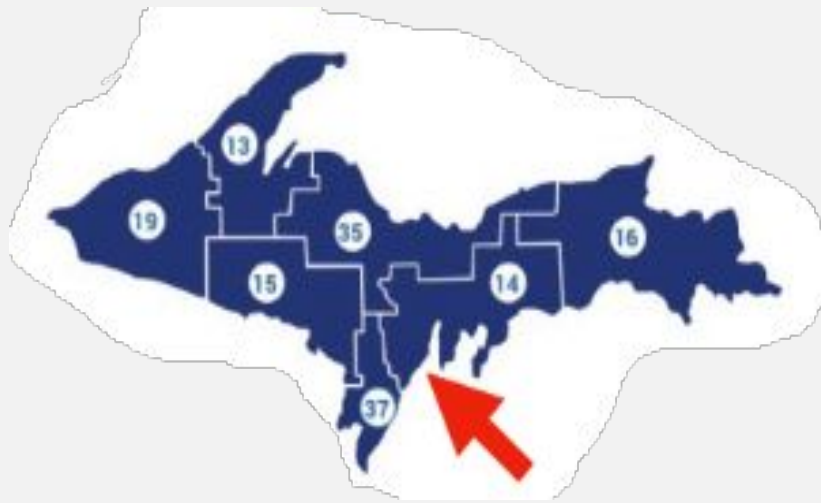


Who we are.

Michigan

- 56 ISDs/RESAs in Michigan
- We are all funded and run differently
- Two compliance roles
 - Special Education
 - Pupil Accounting
- ISDs/RESAs provide and coordinate essential services to their constituent school districts to facilitate teaching and learning. By coordinating efforts and resources, ISD's provide specialized services to students that would not be affordable/feasible otherwise.





Delta-Schoolcraft ISD

- 2500 mi²
- 8 School Districts
- 6, 000 students



Background



- On December 20th, **2018**, the Michigan Senate passed a supplement to the State School Aid Act appropriating \$31.3 million to add behavioral health services **to General Education Students for the 2018-19 school year**
- Subsequent allocations have been approved each year after
- State investment to hire mental health providers in schools statewide: **Section 31n** of the State School Aid Act

Who we serve.

Our Mission.

Intent of 31n funding:

- Enhance and expand the availability of mental health services and supports to **K-12 students**.
- Services are provided to students with **mild to moderate** mental health issues who are not already receiving those services through an IEP/IFSP.
- Appropriate referrals for students in need of more intensive services through the Community Mental Health system, other community provider(s), or Special Education, can also be offered.
- 31n(6) funds should be used for expansion of existing services or to start new mental health services in schools *where there is a gap in available resources*.



DSISD: Increasing Access to Mental Health Services & Supports.

2019-20

- 5-split funded Social Workers [GE & SE]
- Did not have a GE Director
- Lacked systems
- Oh, and a Pandemic

2020-21

- 5-split funded Social Workers
- Project AWARE
- Examined referral pathways
- Explored documentation platforms

2021-22

- 6-Full time Social Workers [31n, PA]
- MH Services Coordinator
- Onboarding & Implementation of BHworks
- Established referral system
- Tier 1 SEL

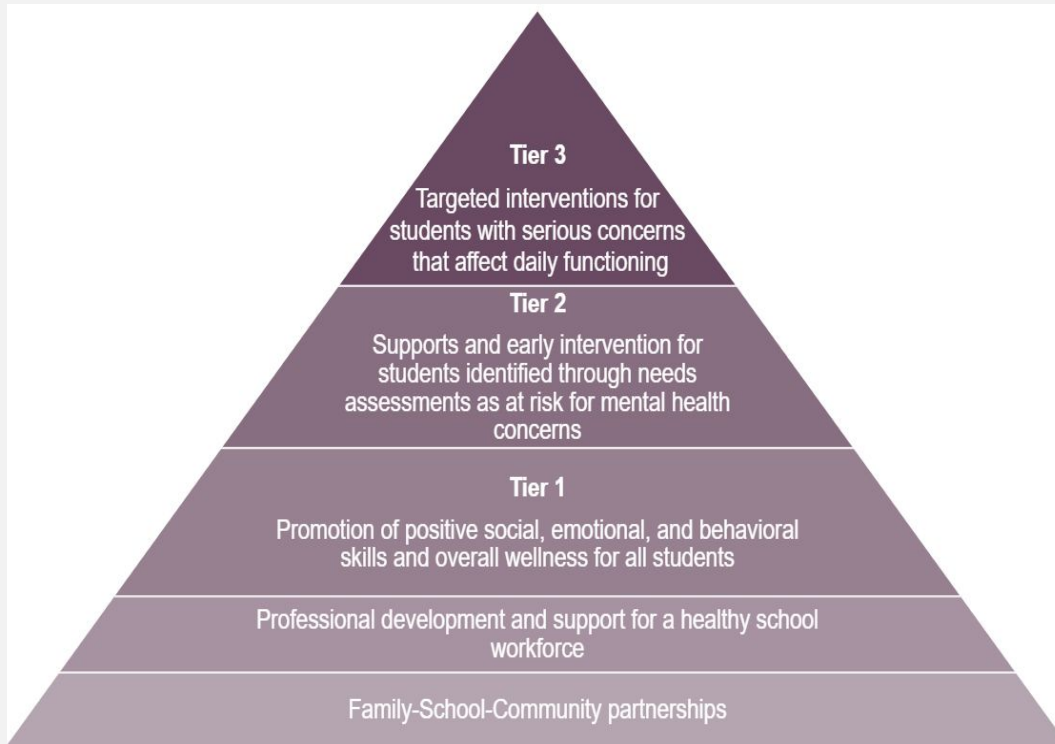
2022-23

- 8-Social Workers
- 1-BCBA
- .75 FTE Contracted Psychotherapist [through Project AWARE]
- Building Teams
- Piloting screening
- Strengthen Tier 1
- Referral Pathways
- Entry/Exit Criteria
- Tier 2 Interventions
- Resource Mapping

2023-24

- Scaling up screening
- Teams
- Tier 1 & 2
- Cont. work developing CSMHS

How we provide Mental Health Services and Supports.



A wide-angle photograph of a long, straight dirt road stretching from the foreground into the distance. The road is flanked by sparse, dry vegetation and shrubs. The sky is filled with soft, white clouds, and the overall lighting is warm and golden, suggesting a sunrise or sunset. The text is overlaid on the upper portion of the image.

WITHOUT DATA

YOU'RE JUST ANOTHER PERSON

WITH AN OPINION

W. EDWARDS DEMING

I have 5 kids for you to see when you get here.

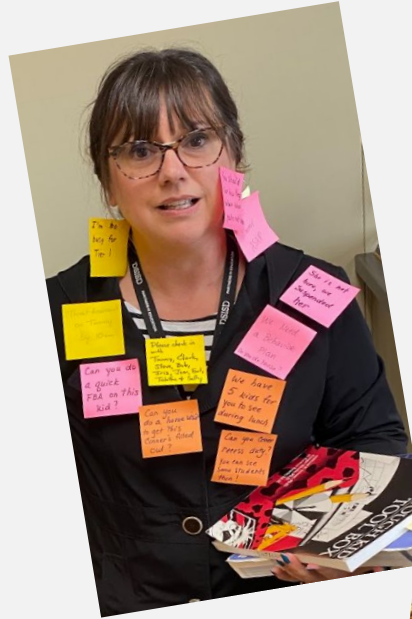
We have a runner.

What is an FBA? Do you do those?

....

What time are you pulling John for his social skills lunch bunch?

During lunch.

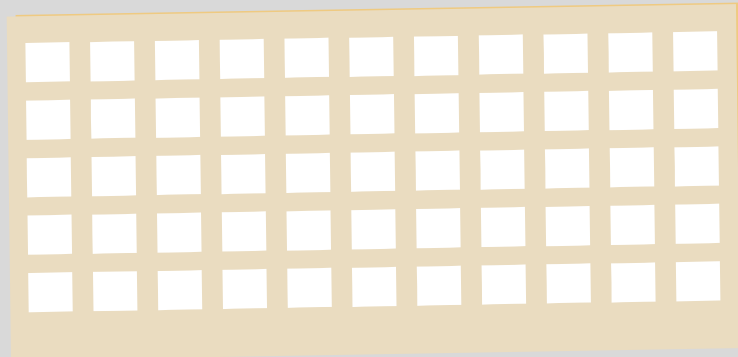


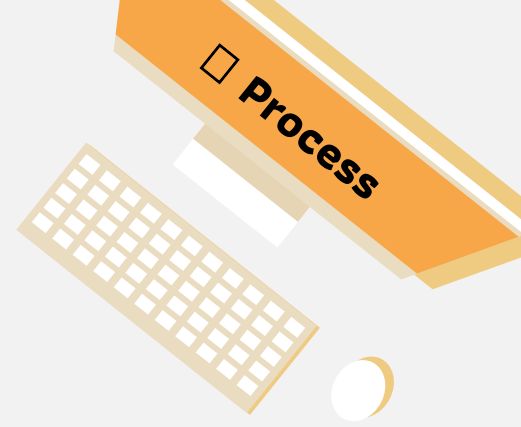
We need a system.



2021-2022

START





We established a workflow.

- Provide education on who we serve [ongoing]; signs and symptoms
- Training on referral process & BHworks
- Referring School
 - Obtains Consent
 - Provides Referral Details
 - Submits referral to ISD
- DSISD
 - Acknowledges referral
 - Assigns Appropriate Provider
 - Screening/Assessment [intake]
 - Determine Eligibility
 - Provide Services as indicated



**Delta-Schoolcraft
 Intermediate School District**
 2525 3rd Ave. S. Escanaba, MI 49829
 Phone: (906) 786-9300 ext. 223 Fax: (906) 786-9318
 kalimenti@dsisd.net www.dsisd.net

Kristy Alimenti
 Mental Health Services
 & Systems Coordinator

August 31, 2021 - April 7, 2022	*Students Referred to a 31n Provider	Started Services		
		Yes	Pending	No
XXXXX Jr. High	62	20	1	41
XXXXX High School	27	18	1	8
XXXXX High School	23	8	2	13
XXXXX K-12	19	7	5	7
XXXXX Middle School	21	15	1	5
XXXXX Elementary	22	19	1	2
XXXXX Elementary	14	9	4	1
XXXXX High School	15	5	7	3
XXXXX Elementary	13	8	2	3
XXXXX Elementary	15	8	3	4
XXXXX Elementary	12	10	1	1
XXXXX K-12	12	10	0	2
XXXXX Elementary	8	7	0	1
XXXXX K-12	17	17	0	0
XXXXX K-12	6	1	4	1
XXXXX Elementary	3	2	0	1
XXXXX High School	1	0	1	0
April 7, 2022 - DSISD Total	290	164	33	93
Change since last report (2/25/22)	+32	+31	-16	+17

Primary Referral Reason

Anxious

Trauma / Negative Life Events

Depressed Mood

Anger Issues

Anxiety

Other

Poor Impulse Control

Other (DO NOT INCLUDE IDENTIFYING INFORMATION)

Suicide Ideation

Grief / Loss

Services Not Started Reason:

Referred for Other Services

No Further Services Needed

Already Receiving Services

Declined Services

Ineligible for Services

Insufficient Information

Other

Services Unavailable

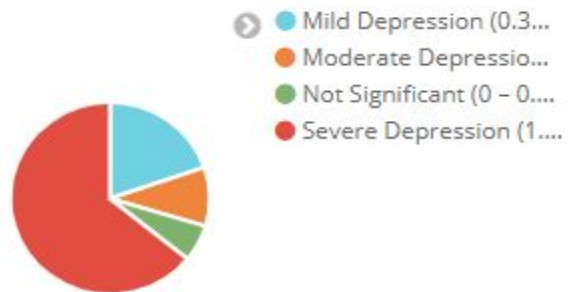
313 referrals have been made to 31n since the start of the 22-23 school year.

Service Type	22-23 School Year to Date
Individual Therapy Sessions	2,329
Evaluation / Assessment	547
Case Management/Care Coordination	367
Other	225
Crisis Response	115
Referral to Other Services/Outside Agency	53
Group Therapy Session	52
Brief Intervention	30
Formal Meeting Consultation	33

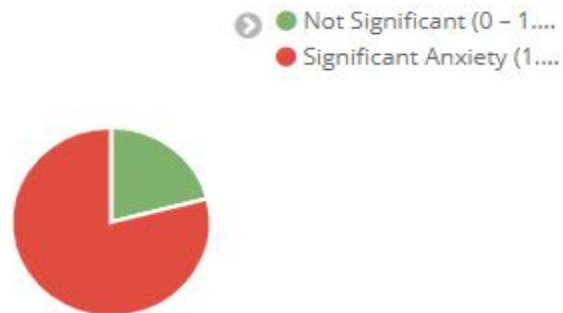


** Demo data

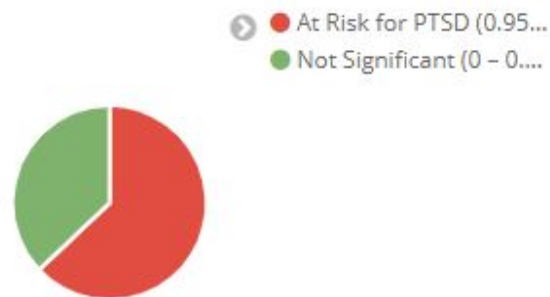
Depression Score (BHS Adol. & Adults)...



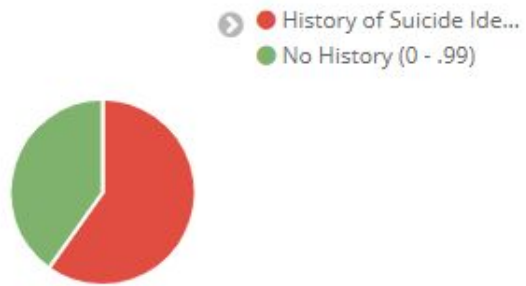
Anxiety Score (BHS Adol. & Adults) on f...



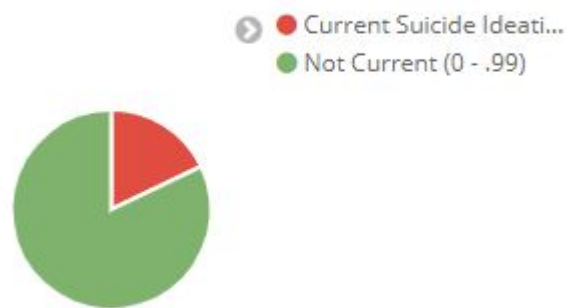
Trauma Score (BHS Adol. & Adults) on ...



Suicide Lifetime Score (BHS Adol. & Ad...



Suicide Current Score (BHS Adol. & Ad...



Lifetime Suicide Attempts (BHS Adol. &...



Impact & Outcomes.

Impact / Outcomes Quarterly Review

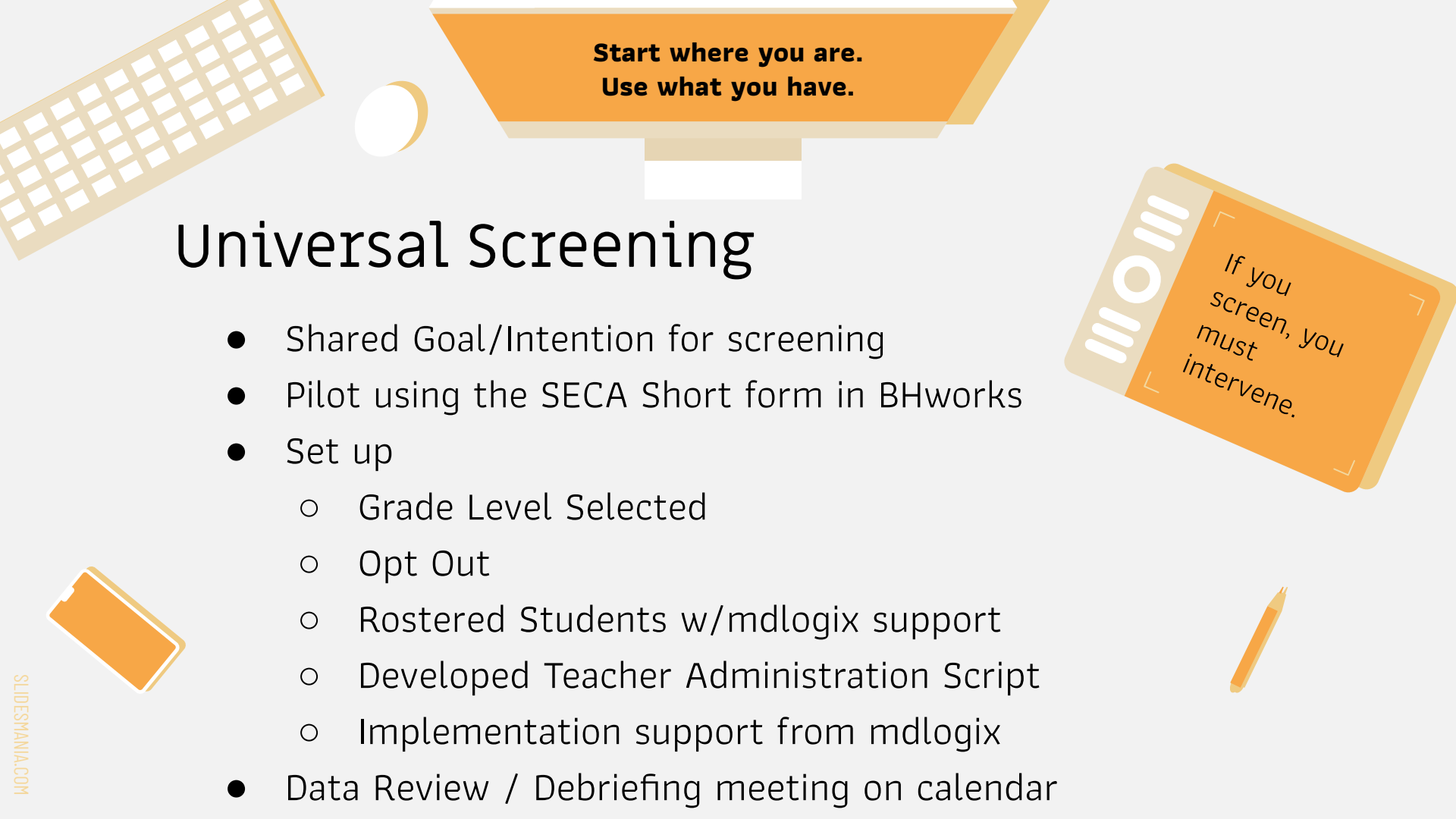
Attendance	Behavior	Grades (% Classes Passing)	Screening Data	Progress Toward Goals (none 0 to 10 achieved)	Student Voice



Reporting

- Bi-weekly
 - Tasks Report
 - Monitoring timelines
 - Tasks coming due
 - Caseload Report
 - Monitor active episodes of care
 - Determination of services
- Monthly
 - Referrals; # entering services
 - Service type





**Start where you are.
Use what you have.**

Universal Screening

- Shared Goal/Intention for screening
- Pilot using the SECA Short form in BHworks
- Set up
 - Grade Level Selected
 - Opt Out
 - Rostered Students w/mdlogix support
 - Developed Teacher Administration Script
 - Implementation support from mdlogix
- Data Review / Debriefing meeting on calendar

If you
screen, you
must
intervene.

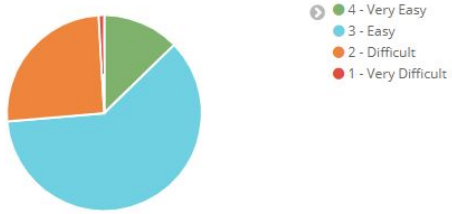
After the Screening.

- Team reflected on results
 - Identify STRENGTHS
 - Identify areas of GROWTH
- Focus on
 - Competencies
 - Specific SEL topics
 - Survey Questions
- What needs to happen
 - Schoolwide?
 - At the GRADE LEVEL?
 - In the CLASSROOM?
 - In SMALL GROUPS?



Self-Awareness: Self-Concept

SECA: Knowing what my strengths are

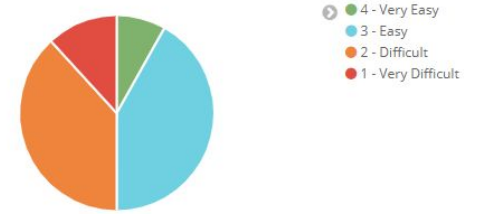


Responsible Decision-Making

SECA: Knowing what is right or wrong

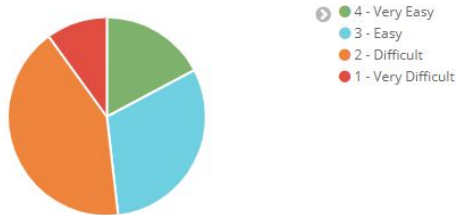


SECA: Thinking about what might happen before making a decision

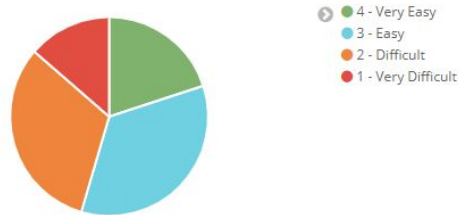


Self-Awareness: Emotion Knowledge

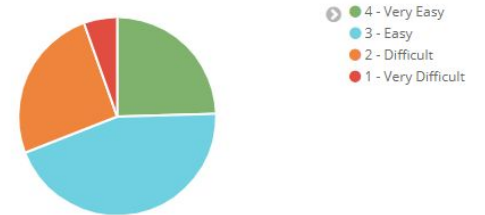
SECA: Knowing when my feelings are making it hard for me to focus



SECA: Knowing ways I calm myself down



SECA: Knowing the emotions I feel



**Demo data



Next Steps.

- Scaling up for Fall '23 with support from mdlogix team
 - Schoolwide [Fall and Spring]
 - Screening Dashboard
- Strengthening Tier 1 practices and implementation
- Developing
 - Tier 2 interventions based on data
 - Resource documents for staff
 - Plan for communicating results to students, staff, parents, stakeholders.
 - Policies, procedures, handbook language





What questions do you have?

Thank you!

kalimenti@dsisd.net

